

# AB TOP SEAL 119



## METHOD STATEMENT

### FOR INTERNAL WET AREAS WATERPROOFING WORKS

#### 1. Objective

To outline the work methodology for Priming, Waterproofing and Concrete Topping works to exposed RC slabs and walls for the Project by means of provision of clear sequences of works in order to achieve a quality finished works.

Waterproofing Areas: Bathroom, Balcony, A/C Ledge, Swimming Pool and Rooftop

#### 2. Scope of Works (Obaproof AB Top Seal 119)

In overall, to achieve the objective outlined, we propose to segregate the works in following stages for ease of monitoring:

Stage	Description	Obaproof Product
1.	Surface Preparation and Preparation of Angle Fillet	Oba Grout 2215
2.	Application of Primer/Bonding Agent	CM-700wp
3.	Treatment to all outlet	PU-1000wp
4.	Application of Waterproofing Coating	AB Top Seal 119
5.	Ponding Test	-
6.	Plastering/Tiling	-

The works for each of the above stages are clarified in the following pages.

#### 3. Work Methodology

##### Stage 1: Surface Preparation and Preparation of Angle Fillet (Obaproof Oba Grout 2215)

- Check for defects on RC slab i.e. cracks, oil patches, foreign materials, cracks etc and inform Main Contractor on rectification required.
- Apply Obaproof Oba Grout 2215 non shrink grout to holes and hollow surfaces to achieve uniform level of RC substrate.
- Apply Obaproof Oba Grout 2215 angle fillet at 45 degrees (25mm x 25mm) consistently throughout perimeter of work area.
- Ensure area is dust free and thoroughly cleaned to receive primer material as per manufacturer's instructions.

##### Stage 2: Application of Primer/Bonding Agent (Obaproof CM-700wp)

- Ensure works for stage 1 complete and verified.
- Dilute 1 portion of Obaproof CM-700wp permeable primer with 3 portion of clean water and then apply 1 coat directly to the surface to improved the bonding strength between existing surface to waterproofing.
- Ensure area of work area is fully sealed with 1 coat of Obaproof CM-700wp primer at the rate of 0.2kg/m<sup>2</sup> and dried for minimum 30 minutes prior to application of next stage.

##### Stage 3: Treatment to all inlet and outlet (Obaproof PU-1000wp)

- Treatment to all inlet and outlet must be coated with two layers of Obaproof PU-1000wp at least 50mm deep and shall extend 50mm up all horizontal or vertical faces.

##### Stage 4: Application of Cementitious Waterproofing Coating (Obaproof AB Top Seal 119)

- Ensure works of stage 2-3 completed and duly verified.
- Mix two components of Obaproof AB Top Seal 119 until a consistent mortar result.

# AB TOP SEAL 119



## METHOD STATEMENT FOR INTERNAL WET AREAS WATERPROOFING WORKS

- Mixing shall be carried out in a clean container by gradually adding the powder component to the liquid component and stirring with slow speed mixer. Use mixture within 30 minutes. 1 set of Obaproof AB Top Seal 119 can be added <1kg of water for smooth application.
- Execute application of Obaproof AB Top Seal 119 cementitious waterproofing coating by means of roller brush.
- Apply in 2 coats with interval between 8-10 hours between each coats, providing a minimum total coat of 1.0kg/m<sup>2</sup>/coat on the works area.
- Leave to cure with adequate protection to the works.
- Protect freshly applied Obaproof AB Top Seal 119 from direct rain for at least 4 hours.
- For optimum performance, Obaproof AB Top Seal 119 should be allowed to cure for 12 hours before the finishing concrete, tiles etc and during this time precautions must be taken in order to prevent damaging to the coating.

### Stage 5: Ponding Test

- Ensure work area applied with waterproofing membrane (stage 4) is fully cured and application verified/approved.
- Carry out ponding test to work area (minimum ponding of 48-72hrs).
- Proceed with next stage if ponding test approved.
- *Note: repeat Stage 4 should ponding test fail.*

### Photo of Application:



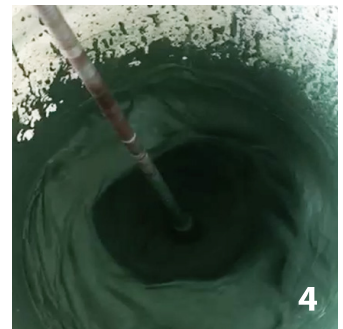
Surface Preparation



Angle Fillet



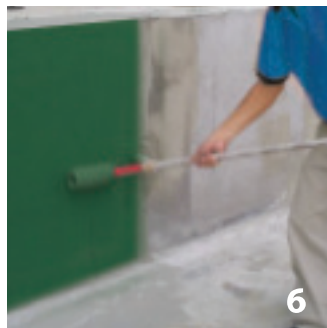
Apply Obaproof CM-700wp as primer



Mix Obaproof AB Top Seal 119 thoroughly. (can add 3-5% clean water to mix container)



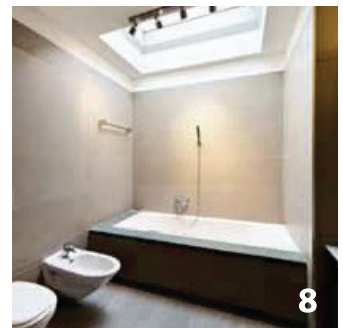
Treatment to inlet / outlet.



Apply first layer of Obaproof AB Top Seal 119 onto construction surface by using brush, roller or spray method.



Completion of Obaproof AB Top Seal 119



Finished